

Constructing the Kulaluk mud crab farm from the ruins of the failed Kulaluk prawn farm ponds. Figures 17 to 31

Gwalwa Daraniki Association and sustainable development on the Kulaluk lease in Darwin.

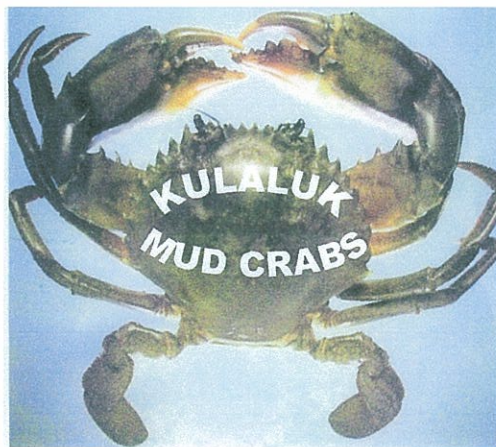


Figure 17. Oct 05. Construction of SW dike viewed SW of base camp (white PVC pipe protecting valve).



Figure 18. Oct 05. NE view of base camp showing work vehicles parked around cement slab.



Figure 19. Oct 05. NE view from pond 3 with seawater seepage from pond monk on the creek side of farm.

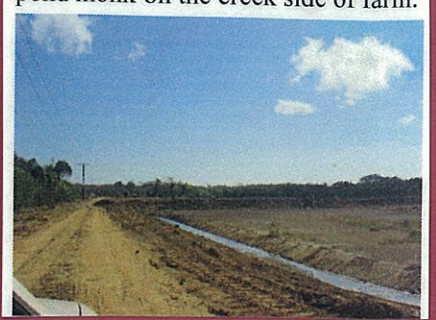


Figure 20. Oct 05. Brooding mud crab place in moat of pond 3 filled with seawater.



Figure 21. Oct 05. Crab shelters made from up-rooted mangroves growing inside dike walls (pond 3).



Figure 22. Nov 05. SW view with wet road base on main farm road that runs between the grow-out ponds (left) and settlement ponds (right).

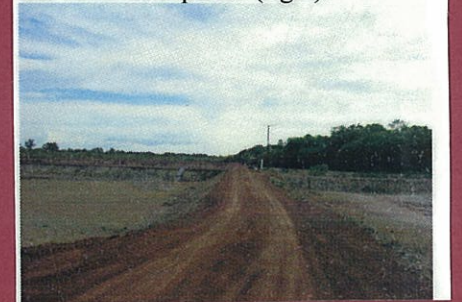


Figure 23. Nov 05. Dry road base on top of dike walls of Pond 1 (NW corner view where electrical cable will run to base camp).



Figure 24. Nov 05. SW view from base camp showing ponds 2, 3 and 4 (note moat filled with rainwater).



Figure 25. Nov 05. Concrete collar to support drains between settlement Ponds 1 and 2 (note red road base).



Figure 26. Nov 05. Concrete drain on creek-side of pond 2 monk (note pipe just below water surface).



Figure 27. Nov 05. Demountable delivered to base camp and positioned directly over foundation footings.



Figure 28. Nov 05. North view of base camp from farthest end of pond 1 showing demountable, shade structure, toilet, and 20 ft container.



Figure 29. Nov 05. Rain-filled Pond 3 showing moat partially filled (note red road base soil on top of dike).



Figure 30. Nov 05. Waterfowl in pond 2 partially filled with rainwater.



Figure 31. Nov 05. Delivery seawater Pipe to be connected to intake pump.

