

Constructing the Kulaluk mud crab farm from the ruins of the failed Kulaluk prawn farm ponds. Figures 32 to 44

Gwalwa Daraniki Association and sustainable development on the Kulaluk lease in Darwin.



Figure 32. Nov 05. Monk walls cut for inserting sluice boards.



Figure 33. Sept 05. East view of easement from pond 1 near tidal creek.

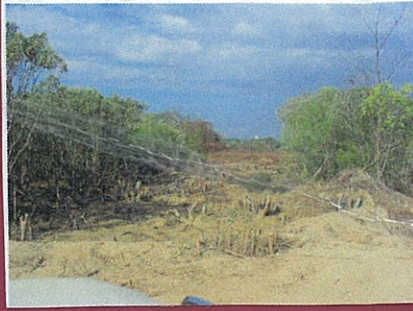


Figure 34. Oct 05. East view of easement showing soil stabilisation structures made of hay/coffee bush logs.



Figure 35. Nov 05 soil stabilisation with black poly pipe freshwater line (note mangrove regrowth).



Figure 36. Oct 05. Soil stabilisation of easement on Dickward Drive side of Farm (frontal view).



Figure 37. Nov 05. Soil stabilisation of easement on Dickward Drive side (side view showing hay and logs).



Figure 38. Nov 05. Rope 100mm above cleared topsoil stretched between stakes to measure the occurrence of erosion along foreshore of saltwater tidal creek (note black poly water pipe).



Figure 39. Abandoned pond at the Kulaluk crab farm in 2009.



Figure 40. An empty and abandoned pond and infrastructure at Kulaluk, 2009.



Figure 41. Abandoned generators at the crab farm.



Figure 42. Abandoned pond and gear in 2009



Figure 43. Mangroves growing in abandoned ponds at Kulaluk crab farm in 2009.



Figure 44. Vines grow on abandoned powerlines leading to Kulaluk crab farm.

